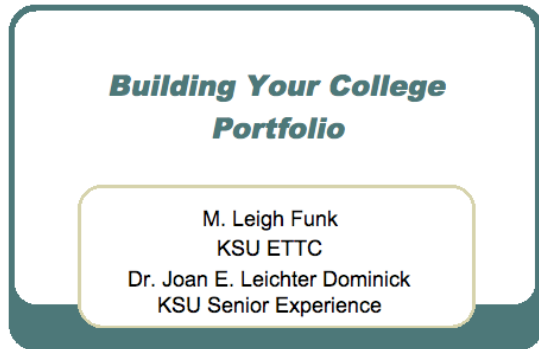


Best of Show Portfolio Assessment Rubric Worksheet with Resources

By Dr. Joan E. Leichter Dominick, copyright 2009



Building Your Best of Show Portfolio Overview:

http://edtech.kennesaw.edu/eportfolio/course/ksu4401/collegeportfolioclass_files/v3_document.htm

Creating a Best of Show ePortfolio

<http://www.joandominick.com/pocketportfolio/intro.html>

The College Portfolio Handbook for Student Success & Global Citizenship by Dr. M. Leigh Funk & Dr. Joan E. Leichter Dominick copyright

<http://www.eport2passport.com/scholarship/prenhall/tableofcontents3.htm#one>

Creating a Best of Show Portfolio with a Global Perspective

<http://www.joandominick.com/ePortfolio2006.html>

Sample Best of Show Portfolios:

<http://www.joandominick.com/foliothinking.html>

Preparing a Portfolio: Florida State Career Center

<http://www.career.fsu.edu/experience/document/portfolio-guide.html>

Also, consult the following Learning Modules on your WebCt Vista Homepage & Chapters 1.1, 1.2 & 1.3 in our Course Textbook Module for more information on creating your portfolio:

What's Your Story? Folio Thinking: Creating Your Reflective Portfolio

Folio Thinking: Creating Your Best of Show Portfolio

Resources for KSU ePortfolio Digital Platforms Web 1.0 & Web 2.0

Sample ePortfolio & Resources from KSU to Worldwide Web 1.0, 2.0 & 3.0

Add/Edit Description

ITS Training Registration, Manuals, & Lab Schedules

Add/Edit Description

C	Connect	<u>Best of Show Portfolio Rubric:</u> Total 250 points
	Name:	Portfolios Storyboard Process: Planning Your Learning Story KSU http://www.joandominick.com/pocketportfolio/courses/storyboarding.html

<p>Grade Points Earned:</p> <p>Mission: _____</p> <p>Total 20 Points</p>	<p>Connect Your Learning: Develop the Mission, Design, and Format Portfolio showcasing your College Graduate as Global Citizen Leader Story http://www.eport2passport.com/scholarship/prenhall/tableofcontents3.htm#one</p> <p>Mission: What is the purpose of the portfolio? Is it clearly stated:</p> <p>Mission of Best of show Portfolio explained for one or more of the following:</p> <ul style="list-style-type: none"> <input type="checkbox"/> Employment <input type="checkbox"/> Graduate School <input type="checkbox"/> Internship <input type="checkbox"/> Scholarship <input type="checkbox"/> Personal <input type="checkbox"/> Entrepreneur <p>Comments:</p>
<p>Design:</p> <p>Total 120 Points</p>	<p>Design: Will the reader understand your learning story? What is the best table of contents for your learning story? http://www.eport2passport.com/scholarship/prenhall/tableofcontents3.htm#one</p> <ul style="list-style-type: none"> <input type="checkbox"/> Learning Story clearly defined <input type="checkbox"/> Establish Credibility using Resume & References <input type="checkbox"/> General Skill showcased <input type="checkbox"/> Specific Academic Major Experience showcased <input type="checkbox"/> Use of Supporting Evidence <input type="checkbox"/> Examples of Global Experience Showcased <input type="checkbox"/> Personal Evidence <input type="checkbox"/> Entrepreneurial Evidence <p>Comments:</p>
<p>Format:</p> <p>Total 80 Points</p>	<p>Format: What is the best delivery of your portfolio? Is the rationale for format choice explained in detail? Has all portfolio work been linked to the KSU Online Career Portfolio as required providing a central way to locate and review portfolio? http://www.eport2passport.com/scholarship/prenhall/tableofcontents3.htm#one</p> <p>KSU Online Career Portfolio (OLCP) Logistics:</p> <ul style="list-style-type: none"> <input type="checkbox"/> Required KSU Online Career Portfolio opened http://careerctr.kennesaw.edu/Portfolio.html <input type="checkbox"/> KSU Online Career Portfolio includes Storyboard <input type="checkbox"/> KSU Online Career Portfolio Format – Main Best of Show Portfolio <input type="checkbox"/> Paper Portfolio Format: Table of Contents linked to KSU OLCP & Hard Copy of portfolio submitted Sample Presentation Portfolios: From Dick Blick Art Materials (Shown only as a sample -if you want to purchase a presentation portfolio search Office Depot, Office Max, Walmart, Staples, Target, etc.) <p>http://www.dickblick.com/categories/portfolios/#presentationcasesandbinders</p> <ul style="list-style-type: none"> <input type="checkbox"/> Pocket ePortfolio

<p>Presentation:</p> <hr/> <p>Total 30 Points</p> <p>Total Points:</p> <hr/> <p>Total 250 Points</p>	<p>http://www.joandominick.com/pocketeportfolio/intro.html</p> <ul style="list-style-type: none"> ❑ KSU ITS Webfolio using Microsoft Publisher Web 1.0 linked to KSU OLCP For Microsoft Publisher Booklet go to Learning Module: Resources for KSU ePortfolio Digital Platforms Web 1.0 & Web 2.0 Add/Edit Description Item #23 Links to set up website on your KSU Website Server Space http://its.kennesaw.edu/helpdesk/student/studentproced.htm http://students.kennesaw.edu/~netid ❑ Other Webfolio Web 1.0 (Dreamweaver, etc.) linked to KSU OLCP For Dreamweaver Booklet go to Learning Module: Resources for KSU ePortfolio Digital Platforms Web 1.0 & Web 2.0 Add/Edit Description Item #13 Links to set up website on your KSU Website Server Space http://its.kennesaw.edu/helpdesk/student/studentproced.htm http://students.kennesaw.edu/~netid ❑ Web 2.0 Interactive Portfolio linked to KSU OLCP http://electronicportfolios.org/web20portfolios.html ❑ iPodfolio, and/or combination of electronic formats linked to KSU OLCP http://www.kennesaw.edu/ptd/elearning/#http%3A//www.joandominick.com/foliothinking.com <p>Best of Show Portfolio Mechanics http://www.joandominick.com/pocketeportfolio/#http%3A//www.joandominick.com/foliothinking.html</p> <ul style="list-style-type: none"> ❑ Clear Navigation Plan ❑ Grammar ❑ Variety of Multimedia Visual Aids ❑ Overall Impact of Portfolio <p>Comments:</p> <p>Presentation of ePortfolio:</p> <p>Tips on Making Presentations http://ksuemail.kennesaw.edu/~jdominic/sac_live/pds/Module_PDS-2.html http://ksuemail.kennesaw.edu/~jdominic/sac_live/pds/index.htm</p>
-------------------------------------------------------------------------------------------------------------	---------------------------------------------------------------------------------------------------------------------------------------------------------------------------------------------------------------------------------------------------------------------------------------------------------------------------------------------------------------------------------------------------------------------------------------------------------------------------------------------------------------------------------------------------------------------------------------------------------------------------------------------------------------------------------------------------------------------------------------------------------------------------------------------------------------------------------------------------------------------------------------------------------------------------------------------------------------------------------------------------------------------------------------------------------------------------------------------------------------------------------------------------------------------------------------------------------------------------------------------------------------------------------------------------------------------------------------------------------------------------------------------------------------------------------------------------------------------------------------------------------------------------------------------------------------------------------------------------------------------------------------------------------------------------------------------------------------------------------------------------------------------------------------------------------------------------------------------------------------------------------------------------------------------------------------------------------------------------------------------------------------------------------------------------------------------------------------------------------------------------------------------------------------------------------------------------------------------------------------------------------------------------------------------------------------------------------------------------------------------------------------------------------------------------------------------------------------------------------------------------------------------------------------------------------------------------------------------------------------------------